

Océ Patch installation instructions for MS13-081

| | |
|--------------------|---|
| Océ Patch for | Océ PW300 1.2.4/1.2.1 Océ PW350 1.0.1/1.0 Océ PW900 1.2/1.1.1/1.0 Océ CW300 1.2.4/1.2.3/1.2.1 Océ CW650 2.3.3/2.3.2/2.3.1 Océ CW550 2.3.3/2.3.2/2.3.1 Océ TDS320 1.0.13/1.0.12/1.0.11.2/1.0.11 Océ TDS450 3.8.3/3.8.2//3.7.1 Océ TDS600 4.1.13/4.1.12/4.1.11.2/4.1.11 Océ TDS700 1.8.3/1.8.2/1.7.1 Océ TDS750 1.8.3/1.2.2/1.1 Océ TDS800 2.1.13/2.1.12/2.1.11.2/2.1.11 Océ TDS860 1.0.13/1.0.12/1.0.11.2/1.0.11 Océ TCS500 1.8.3/1.8.2/1.7.1 Océ TC4 1.8.3/1.8.2/1.7.1 |
| Microsoft bulletin | MS13-081 |
| Océ Remote patch | Name: Patch_Remote_shf035v1.0.2.oce Size: 4 413 195 bytes Revision date: 28/Nov/2013 |

Download the patch file **Patch_Remote_shf035v1.0.2.oce** and save the file on your computer (WinXP/WinServer2003/Vista/WinServer2008/Win7/Win8/WinServer2012). Then go to the relevant section related to your product below :

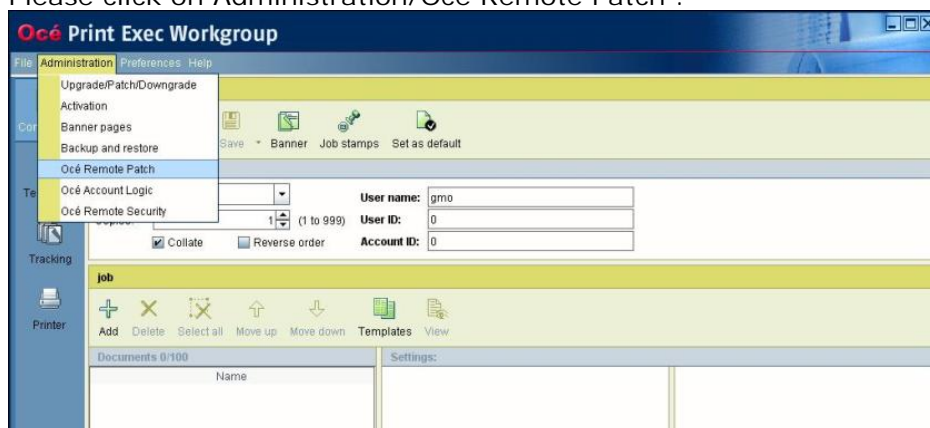
For an Océ

TDS450/TDS600/TDS700/TDS750/TDS800/TDS860/TCS500 system :

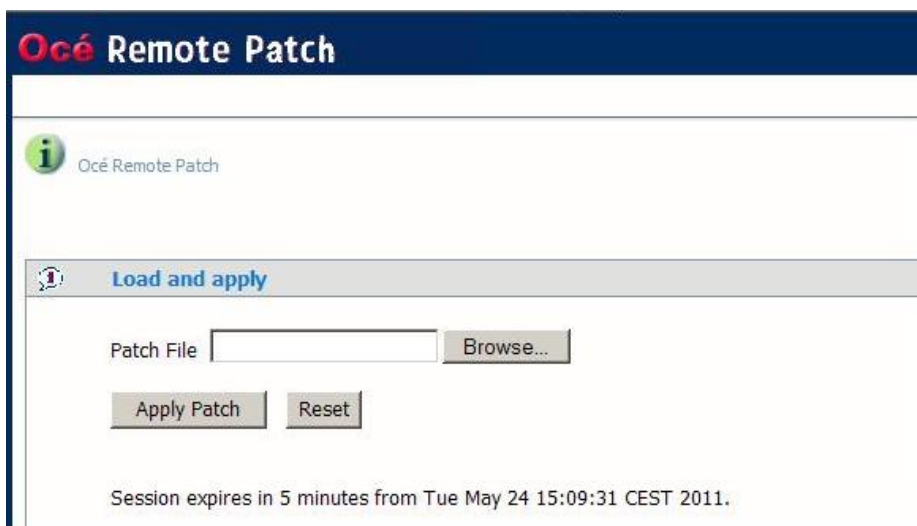
1. From a Web browser (on your computer), enter the following URL :
http://<tds-tcs_hostname_or_ip_address>

where <tds-tcs_system_hostname_or_ip_address> is the hostname or IP address of the TDS-TCS system

Please click on Administration/Océ Remote Patch :



2. A login window will appear, please enter the System Administrator manual (please refer to the Printer User manual for default password), then the following page will appear :



3. Browse for the patch previously downloaded then click on "Apply Patch", a confirmation popup window will appear. After you will confirm, some information will be displayed on the screen to inform you on the patch process.
4. After a little while, you'll be able (after refreshing the URL mentioned in Step 1, then going on Administration/Océ Remote Patch) to check whether the patch has been installed :
 - * latest successful installed patch :
...Patch shf035 v1.0.2 ... : Deployment of Microsoft Security Update MS13-081..
 - * last execution status : ... Success

Verifying if the patch was applied successfully using Print settings :

1. Make a « Print settings » (Refer to your Printer User manual for more details)
2. Go to the last printout page in the section:

SDS - CONTROL PARAMETERS 22-1, the last line is called:

Patches installed = <value>

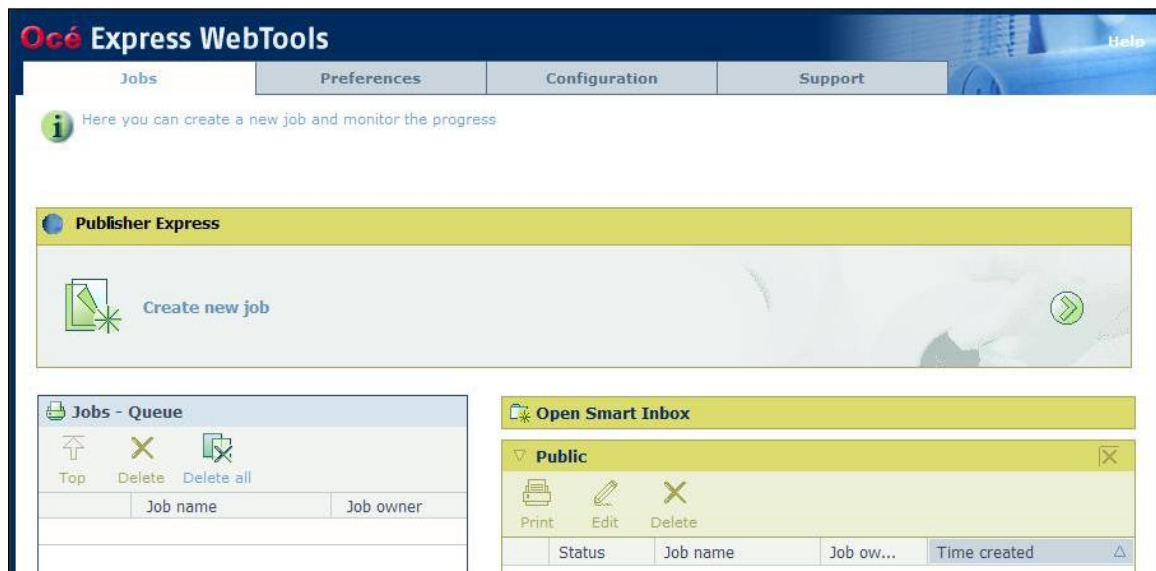
Check that « <value> » is greater or equal to 400000000000

For an Océ PW300/Océ PW350/Océ PW900R1/Océ CW300/Océ CW650R2/Océ CW550R2 system :

1. From a Web browser (on your computer), enter the following URL :
`http://<pwXX0-cwXX0_system_hostname_or_ip_address>`

where <pwXX0-cwXX0_system_hostname_or_ip_address> is the hostname or IP address of the PWXX0 or CWXX0 system

The following page will appear :



2. Click on "Support" Tab, then on "Update", a login window will appear, please enter the System Administrator manual (Refer to the Printer User manual for default password), then the following page will appear :



Océ Express WebTools CW650 Log out Help

Jobs Scanner accounting Preferences **Configuration** Support

About Counter history Media **Update** Licenses

View the current software version. You can also update the system software or revert to the previous software version. You can download software update packages from <http://global.oce.com/Support> or you can obtain a software update CD via your Océ vendor.

| Current software version | | Update |
|---------------------------|-------------------|--------|
| Version | Installation date | |
| Océ ColorWave 650-2.0.1.0 | 20 April 2012 | |

| Scanner configured | | Configure |
|--------------------|--------------------------------|-----------|
| Version | Scanner software update result | |
| Océ TCS4 scanner | | |

| Operating system patches | | Install |
|----------------------------------|-----------------------------|---------|
| Patches | Patches installation result | |
| No patch has been installed yet. | | |

OR

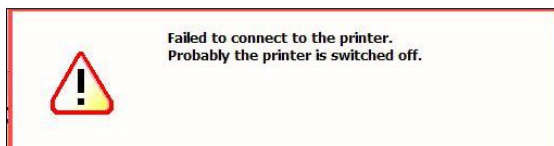
- Click on the "Install" icon on the right side, an "Install operating system patches" window will appear, click on OK, then the following window will appear, :

Please select the files that you have downloaded from <http://global.oce.com/products/plotwave300/support.aspx> or that you received on CD-ROM from your Océ vendor.

The file name should begin with 'Patch_Remote_' and end with '.oce'. Example:
Patch_Remote_ColorWave650v1.oce

Software package (*.oce):

- Browse for the patch previously downloaded then click on "OK", a confirmation window to apply the patch will appear, click on OK to confirm, another "Install operating system patches" window may appear, click on OK again, then the following window may appear:



Please don't care this warning message (the system is currently being rebooted)

- After a little while, after refreshing the URL then accessing to the "Update" page (See in step 1), you can control whether the patch has been installed :

* latest successful installed patch or Operating system patches :
...Patch shf035 v1.0.2 ... : Deployment of Microsoft Security Update MS13-081..

* last execution status : ... Success

Verifying if the patch was applied successfully using Print settings (Océ PW300/Océ PW350/Océ CW300) :

1. Make a « View Set » (Refer to your Printer User manual for more details)
2. Check the Patch number in “Hardware and software configuration”

Patch number  <value>

Check that « <value> » is greater or equal to 400000000000

For an Océ TC4/TDS320 system :

1. From a Web browser (on your computer), enter the following URL :
`http://<tds-tc4_hostname_or_ip_address>/OceRemotePatch.html`

where <tds-tcs_system_hostname_or_ip_address> is the hostname or IP address of the TDS-TCS system

Note : Please respect lowercase/uppercase for "OceRemotePatch.html"

2. When the following page appears, enter the password (see your Printer User manual) :

Océ Remote Patch™

| | |
|-----------|---|
| User name | <input type="text" value="System Administrator"/> |
| Password | <input type="password"/> |
| | <input type="button" value="Login"/> |

3. When the following page appears, browse for the patch previously downloaded :

Océ Remote Patch™

| | | |
|--|--------------------------------------|--|
| Patch File | <input type="text"/> | <input type="button" value="Browse..."/> |
| <input type="button" value="Apply Patch"/> | <input type="button" value="Reset"/> | |

4. When clicking on "Apply Patch" a confirmation popup window will appear. After you will confirm, some information will be displayed on the screen to inform you on the patch process. Then the controller will reboot in order to complete the patch application

5. After a little while, you'll be able after refreshing the URL (see Step 1) to see the following page again (after controller will have been rebooted) :

Océ Remote Patch™

| | |
|-----------|---|
| User name | <input type="text" value="System Administrator"/> |
| Password | <input type="password"/> |
| | <input type="button" value="Login"/> |

6. After having entered the relevant password (Please see your Printer User manual), a web page page will appear, and you can control whether the patch has been installed :
 - * latest successful installed patch...Patch shf035 v1.0.2 ... : Deployment of Microsoft Security Update MS13-081..
 - * last execution status : ... Success

Verifying if the patch was applied successfully using Print settings (for Océ TDS320) :

1. Make a « Print settings » (Refer to your Printer User manual for more details)
2. Go to the last printout page in the section:

SDS - CONTROL PARAMETERS 22-1, the last line is called:
Patches installed = <value>
Check that « <value> » is greater or equal to 400000000000

<end of document>